

# Emerging proposals for a marina led leisure development on land at Eastfield Rise Farm, Fiskerton Road, Cherry Willingham.

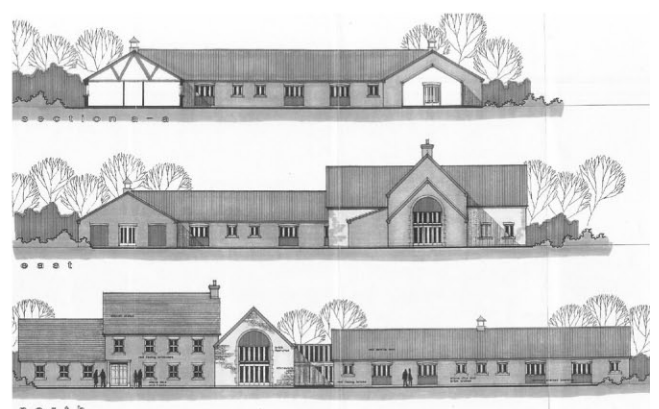
**Some local residents may be aware of ideas and aspirations for a marina development on land between the village and the River Witham. The proposed development is a response to the research and strategic work undertaken by the Lincolnshire Waterways Partnership which identifies a serious deficiency in waterways facilities within the County, leading to missed opportunities to capitalise on visitors coming to our area and spending money supporting local services and facilities. A suitable location east of the City of Lincoln is specifically targeted as desirable.**

You will be aware that this site currently accommodates a series of large agricultural buildings in the north west of the landholding along with arable fields and pasture. The intention is to look very carefully at how a development could be accommodated here in a manner that doesn't harm the open countryside character of the area and actually delivers investment which positively enhances it. This is to be achieved by the very careful siting of development coupled with well considered landscaping and habitat creation. The investment will open up a significant area of open space that is currently not generally available to the public with walkways, cycleways and even bridleways. New facilities will be attractive to visitors and local residents alike and they must be well connected and accessible to all. Public access to the river has been difficult to achieve and will be facilitated with picnic areas and direct access onto the Viking Way route.

We know that there is a wide range of sensitivities associated with such a development and numerous constraints as well as opportunities. These need



to be well understood to help evolve a sensible proposal. These include ecological matters, landscape impact, traffic and transportation, heritage and flood risk. A great deal of work has been undertaken and is ongoing to make sure that this proposal is well informed. It would have been premature to share too much of this information before the basic 'homework' had been undertaken. However, we now feel that we are in a position to share this information with local people to make sure they are fairly and properly informed. Just as importantly we want to hear your comments, suggestions or concerns. Initial discussions have taken place with local District Councillors, Parish Council representatives and with planning officers but it is important that you have an opportunity to influence the thoughts and the process going forward.





You can see from the illustrations here the type of development being proposed, the approximate location of the marina, marina facilities, a hotel/restaurant and holiday lodges. You will also see that traffic calming measures are proposed including the provision of a roundabout to access the site. Whilst this may not strictly be required in order to satisfy highway considerations, we are very mindful that this stretch of Fiskerton Road is used at much higher speeds than villagers would see as desirable. A roundabout will force cars to slow down and also facilitate better access into and out of Lady Meers Road. It may be that additional traffic calming at the western approach would also be beneficial. A calmer and more sensibly used stretch of road through the village will be much easier to cross, enabling these facilities and amenities to become a key part of the village.

Kind Regards,

**Phil Scrafton**  
Director, Globe Consultants



## HAVE YOUR SAY

The main purpose of this insert is to provide some basic information about a proposal that is evolving and which will be the subject of a planning application. It is also to inform you that we will be present in the village library on **Saturday 6th November between 10.00am and 1.00pm** so that people can pop in at their convenience to see the proposal and also speak with us directly.